

SEAFLO®

03,04 Float Switch Instruction Manual

FEATURES

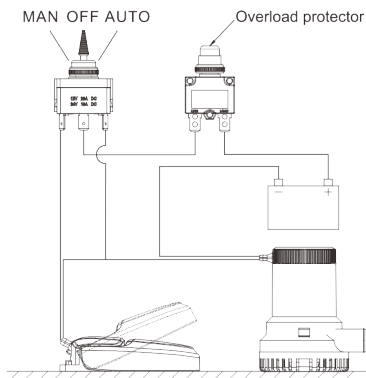
- Mercury free
- Compact design, easy installation
- When water level is lower than 20–25 mm (0.79"–0.98"), switch will turn off automatically.
- When water level is higher than 45–50 mm (1.77"–1.97"), switch will turn on automatically.

ELECTRICAL INFORMATION

Model	Max Amps	Wire Gauge Size	Wire Lead	N.W. / G.W	Dimension
SFBS-12-04A	12 A	16 AWG	1 M	105 G	L110 mm*W77 mm*H33 mm
SFBS-12-04B	12 A	16 AWG	1 M	175 G	L144 mm*W92 mm*H81 mm
SFBS-25-03A	25 A	14 AWG	1 M	120 G	L133 mm*W76 mm*H33 mm
SFBS-25-03B	25 A	14 AWG	1 M	190 G	L144 mm*W92 mm*H81 mm

★ "A" refers to without filter housing; "B" refers to with filter housing.

INSTALLATION



TIPS FOR WIRE CONNECTION

- Twisting the wire together to reduce RFI (radio interference)
- Please use the recommended fuse as the label of pump.
- The fuse must be installed between battery and switch panel.
- Keep the wire connection above from water level, and seal a wire with waterproof marine sealant to avoid corrosion.

CAUTION

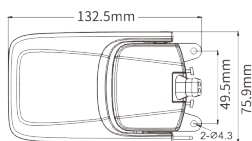
- Connect the brown wire of float switch to the positive of pump (brown wire) and then connect the wire to manual option of switch panel.
- Connect the other brown wire of float switch with automatic option of switch panel.
- Connect the negative of pump (black wire) with the negative of battery.

Instruction:

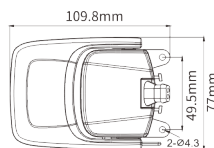
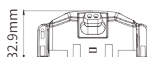
- When the switch panel is in manual option, the pump is turned on by manual. The switch panel will turn off when you release your hand from the switch panel. If the switch panel is in automatic option, when the water level is higher than 45–50 mm (1.77"–1.97"), the pump will turn on automatically; while the water level is down to 20–25 mm (0.79"–0.98"), the pump will turn off automatically.
- Install the switch together with the bilge pump in the bottom of the bilge. Keep away from high temperature, engine etc.
- To have a better performance, the switch should be installed horizontally, the maximum mounting angle should be 30°
- Use tinning wire to prevent from erosion.

DIMENSIONS

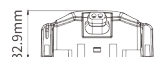
Size of float switch



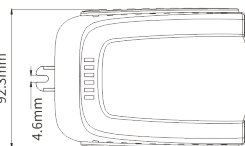
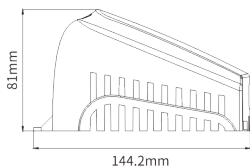
25 A



12 A

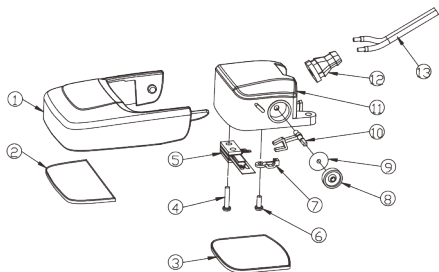


Size of cover housing

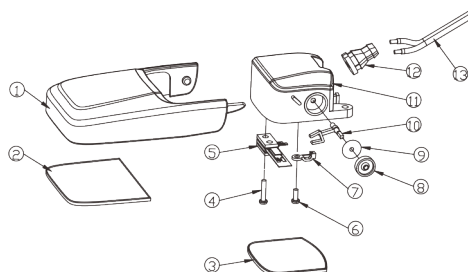


cover housing for both 12A and 25A

REPAIR KITS



12 A



25 A

Key	Description		Quantity
	12A	25A	
1	12A floater	25A floater	1
2	Float plate		1
3	Main casing plate		1
4	screw-1		1
5	Shrapnel switch	Shrapnel switch	1
6	screw-2		1
7	fixed part of spindle		1
8	Oil seal		1
9	Rubber gasket		1
10	12A axis of rotation	25A axis of rotation	1
11	Main casing		1
12	Seal for wire		1
13	16 AWG Wire	14 AWG Wire	2