

## Kong Stainless Steel Anchor Connector with Swivel

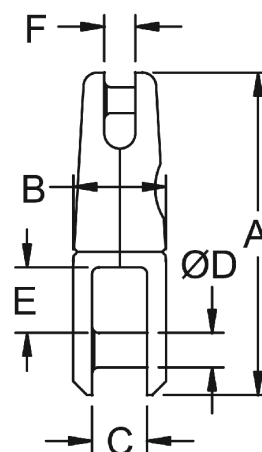


Stainless steel anchor connector with swivel.

These polished stainless steel slim line swivelling anchor connectors are designed to go over bow rollers and pass through hawspipes without snagging or hanging up, made from polished 316 stainless steel they are elegant and will give years of service.

The ingenious swivel design makes sure that your anchor and chain comes up without twists, they are strongly recommended for anchors that self stow on the bow roller or in a hawspipe.

Stainless Steel AISI 316



| Part      | Chain mm    | A mm | B mm | C mm | D mm | E mm | F mm | Side Work Load Kg | Straight Work Load Kg | Straight Break Load Kg |
|-----------|-------------|------|------|------|------|------|------|-------------------|-----------------------|------------------------|
| KG-AC08-S | 6 - 7 - 8   | 93   | 28   | 16   | 10   | 19   | 9    | 850               | 850                   | 2500                   |
| KG-AC10-S | 8 - 10 - 12 | 117  | 37   | 22   | 13   | 23   | 13   | 2000              | 2000                  | 5000                   |
| KG-AC12-S | 12 - 14     | 155  | 66   | 35   | 18   | 30   | 17   | 3000              | 3000                  | 9500                   |
| KG-AC16-S | 16 - 19     | 190  | 86   | 43   | 22   | 42   | 20   | 5000              | 5000                  | 20000                  |